

Next
training dates:
18-21 May 2020
£2,250

The ISF Standard of Good Practice for Information Security 2018.

Certified Practitioner Training Course (SoGP-CP).



As a Certified Practitioner, you will be equipped to:

- Build a security framework based on the ISF Standard
- Apply a risk-based approach to information security
- Conduct reviews of information and cyber security controls
- Identify gaps in policies, standards and procedures
- Use the Standard to help develop a security awareness programme
- Review supplier security status.



Who should attend?

Typical roles that this course would apply to include:

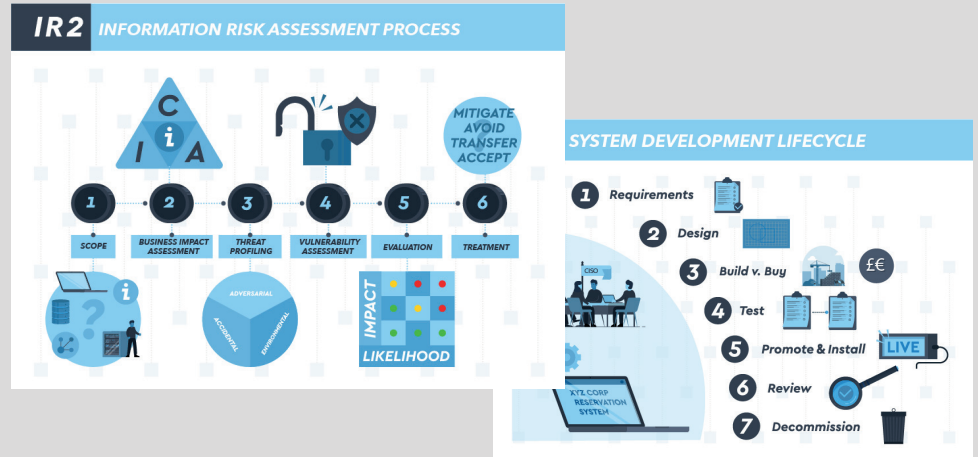
- Information Security Specialists, Architects and Consultants
- IT, Cyber and Corporate Security Managers
- Information Risk and Compliance Managers
- Internal and External Auditors.

- ✓ Formal qualification (SoGP-CP)
- ✓ Enhanced career opportunities
- ✓ Recognition of competence in Information Security
- ✓ Maximises ISF Membership benefits
- ✓ 4-day course
- ✓ Supporting examination

Course dates to be published shortly
Contact info@crm-g-consult.com for more information.

Visual, scenario-based training approach.

1 Each of the 34 Areas in **The Standard** presented as an illustrated scenario.



2 Key learning points for every **Topic** within each **Area** highlighted.



CRMG Area TM1: Cyber Security Resilience		
<p>TM1.1 Technical Vulnerability Management</p> <ul style="list-style-type: none"> Technical vulnerability identification and remediation process Regular scans of systems and equipment Rigorous, timely patch management process 	<p>TM1.2 Security Event Logging</p> <ul style="list-style-type: none"> Event logging on the right systems Logs configured to record specified types of security event Event log review, analysis, retention and storage Event logs stored securely in central repository (e.g. using a SIEM) Event logs protected against corruption 	<p>TM1.3 Security Event Management</p> <ul style="list-style-type: none"> Security event management process (often part of a SOC) Strict configuration of security event management software (e.g. a SIEM) Collection, normalisation, aggregation and correlation Regular analysis to identify and investigate anomalous activity Approved response mechanism for suspected and actual security events
<p>TM1.4 Threat Intelligence</p> <ul style="list-style-type: none"> Threat intelligence (TI) capability TI lifecycle and analytical tools TI created from analysis of information from multiple sources Relevant, insightful, Contextual and Actionable 	<p>TM1.5 Cyber Attack Prevention</p> <ul style="list-style-type: none"> Protection against sophisticated, targeted, cyber attacks Covers each stage of cyber attack chain: <ol style="list-style-type: none"> Reconnaissance Gaining access Maintaining control Compromising information Exploiting information Provides early warning system Balance of preventative, detective and specialised security controls 	

3 Further course content dedicated to using **The Standard** in 8 contexts.

- Resilience
- Risk Assessment
- Supply Chain Management
- Compliance
- Policies, Standards & Procedures
- Awareness
- Information Security Assessment
- Security Arrangements

CRMG Information Security Assessment: Reference sheet

Topic
SI1: Security monitoring and reporting
SI2: Information risk reporting
SI3: Information security assurance
SI4: Quality assurance
SI5: Security audit
IR2: Vulnerability assessment
SI6: System promotion criteria (SI 1, 7, 3)
SC1: External supplier management process
SC2: Cloud service contracts

ISF Tools

- Benchmark
- Healthcheck
- IRAM2

Other useful sources

- ISO 27001
- ISO 27001 ISMS auditing
- Cyber Essentials and Cyber Essentials +
- Security ratings software (e.g. BITSOFT and Security Scorecard)
- GRC Tools



This course has been developed by CRMG - ISF's Consulting delivery partner - with input and review by the ISF. The training material and approach have been developed by the world's leading experts in the ISF Standard of Good Practice for Information Security.



Certification awarded by a globally recognised certification body, PECB (Professional Evaluation and Certification Board).